

Installation instructions ARSpeed intercooler kit Mazda 6 MPS

1. Remove the bumper, OEM intercooler, passenger side headlight.
2. First, install the ARSpeed intercooler. To do this, you must remove the marked sections on the left and right side.



3. Remove some of the material on the inside of the strut shown.



4. The exact height of the intercooler is determined by the holder supplied.



5. Now you can attach the intercooler (determine the center yourself)

6. In the following photo the front panel has been partially removed, this is optional and does not have to be done. However, what needs to be removed is the perforated plate that is located on the back of the front bar



7. After the intercooler has been attached, you can now start with the intercooler piping.

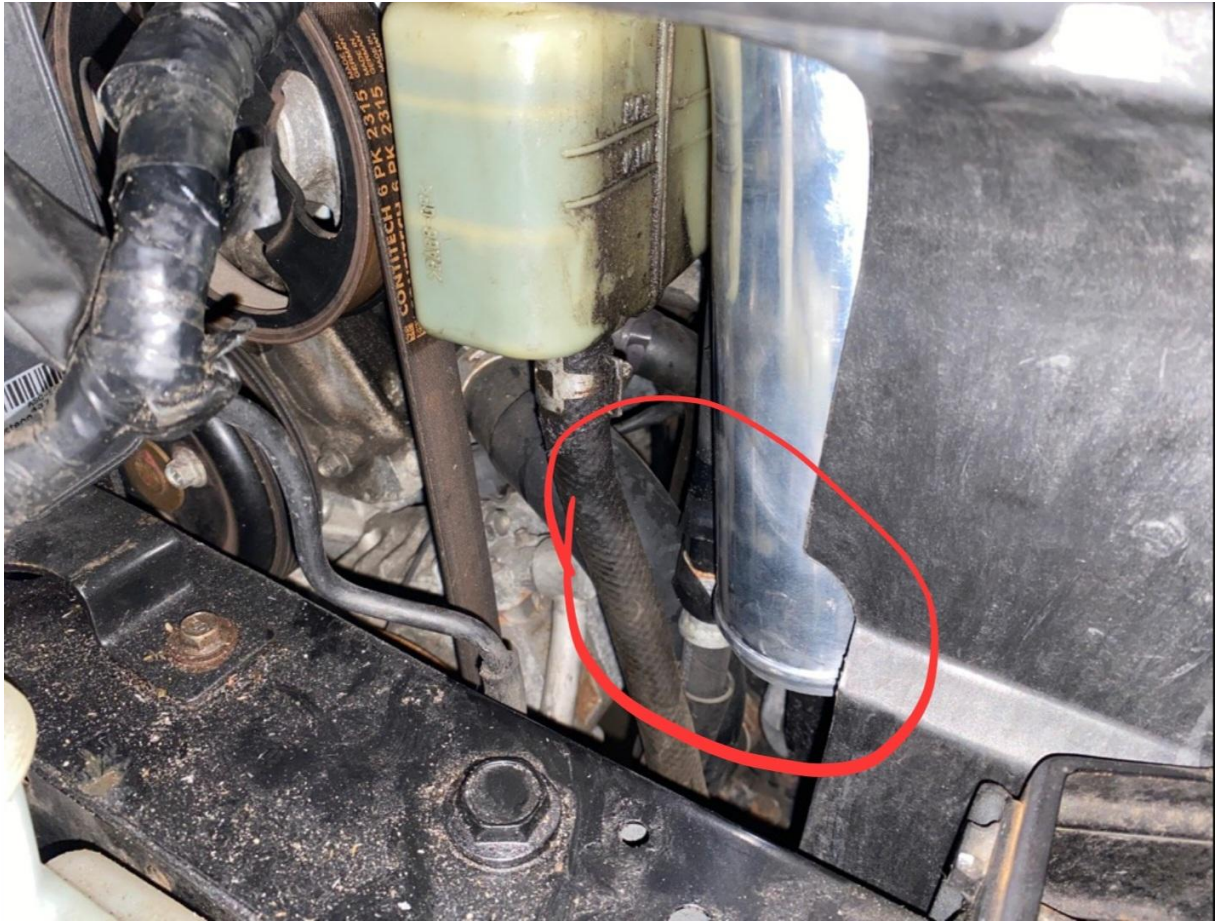
8. The correct order of the pipes and silicone connectors can be found in the following photo.



9. On the passenger side, the following sheet metal must be removed so that the pipe can fit through. And at the level of the intercooler connector.



10. The position of the long pipe that goes to the turbocharger is shown here. To make it easier to attach and fasten the silicone connector, remove the headlight (passenger side)



11. On the cold side where the piping goes to the intake manifold, a hole must be cut through the plastic shield of the water cooler. Please also note that you do not swap the two pipes (see photo)



When attaching the bumper, a small part of the inside of the fog light holder may need to be sanded off. So that it doesn't touch the 90° silicone connector.

If you have any further questions, please do not hesitate to contact us at:

info@arspeed.at

Whatsapp +436601880423